

Band-o-Rama

Scale Sheets

Revised 2019

- **SCALES MUST BE MEMORIZED**
- Students will be asked to play scales in relation to the number of years in band. Include the current year in counting number of years played.
- 1st Year students will be required to play the Concert Bb Major Scale (except Horn-see sheet).
- 2nd Year students will be required to play Concert Bb and F Major Scales, and the Concert Bb Chromatic Scale. Horns have the option of playing their Concert F Chromatic Scale instead of Concert Bb Chromatic.
- 3rd Year students will be required to play the 1) Concert Bb Chromatic Scale and 2) The judges choice of two of the following: Concert Bb, F, Eb, and C Major Scales. Horns have the option of playing their Concert F Chromatic Scale instead of Concert Bb Chromatic.
- 4th Year students will be required to play 1) Concert Bb Chromatic Scale and 2) The judges choice of two of the following: Concert Bb, F, Eb, C, G, and Ab Major Scales. Horns have the option of playing their Concert F Chromatic Scale instead of Concert Bb Chromatic.
- The students will be asked to play the scales in **CONCERT PITCH** (they will have to do the transposition on their own).
- Students playing more than one octave, or the entire ILMEA Junior Band Scale sheet, may be awarded a one point deduction on their score so long as the scales are performed at a 1 level. This award is given at the judge's discretion.

ILMEA Junior Band Audition Scale Sheets

Rev. 6/2014

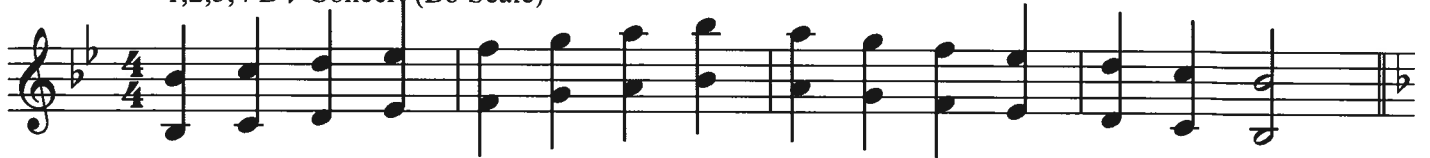
Flute



BAND-O-RAMA SCALE SHEET

Oboe/Mallet Percussion

1,2,3,4 B \flat Concert (B \flat Scale)



5 2,3,4 F Concert (F Scale)



9 3,4 E \flat Concert (E \flat Scale)



13 3,4 C Concert (C Scale)



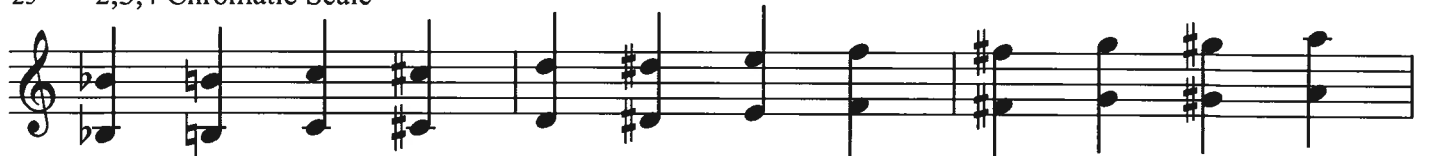
17 4 G Concert (G Scale)



21 4 A \flat Concert (A \flat Scale)



25 2,3,4 Chromatic Scale



28



ILMEA Junior Band Audition Scale Sheets

Rev. 6/2014

Oboe



ILLINOIS MUSIC EDUCATION ASSOCIATION

ILMEA Junior Band Audition Scale Sheets

Rev. 6/2014

Soprano Clarinet in B \flat



ILLINOIS MUSIC EDUCATION ASSOCIATION

ILMEA Junior Band Audition Scale Sheets

Rev. 6/2014

Alto, Bass or Contra Clarinet



ILMEA

ILLINOIS MUSIC EDUCATION ASSOCIATION

ILMEA Junior Band Audition Scale Sheets

Rev. 6/2014

E♭ Saxophones



BAND-O-RAMA SCALE SHEET

Trumpet/Baritone T.C.

1,2,3,4 B \flat Concert (C Scale)



5 2,3,4 F Concert (G Scale)



9 3,4 E \flat Concert (F Scale)



13 3,4 C Concert (D Scale)



17 4 G Concert (A Scale)



21 4 A \flat Concert (B \flat Scale)



25 2,3,4 Chromatic Scale



28



ILMEA Junior Band Audition Scale Sheets

Rev. 6/2014
Trumpet in B \flat
Euphonium T.C.



BAND-O-RAMA SCALE SHEET

Horn

2,3,4 B \flat Concert (F Scale)



5 1,2,3,4 F Concert (C Scale)



9 3,4 E \flat Concert (B \flat Scale)



13 3,4 C Concert (G Scale)



17 4 G Concert (D Scale)



21 4 A \flat Concert (E \flat Scale)



25 2,3,4 Chromatic Scale



32 2,3,4 Chromatic Scale (may be played instead of F Chromatic Scale)



ILMEA Junior Band Audition Scale Sheets

Rev. 6/2014

Horn in F



ILLINOIS MUSIC EDUCATION ASSOCIATION

ILMEA Junior Band Audition Scale Sheets

Rev. 6/2014

Bassoon, Trombone & Euphonium B.C



ILLINOIS MUSIC EDUCATION ASSOCIATION

BAND-O-RAMA SCALE SHEET

Tuba

1,2,3,4 B \flat Concert (B \flat Scale)



5 2,3,4 F Concert (F Scale)



9 3,4 E \flat Concert (E \flat Scale)



13 3,4 C Concert (C Scale)



17 4 G Concert (G Scale)



21 4 A \flat Concert (A \flat Scale)



25 2,3,4 Chromatic Scale



28



ILMEA Junior Band Audition Scale Sheets

Rev. 6/2014

Tuba



ILLINOIS MUSIC EDUCATION ASSOCIATION

BAND-O-RAMA RUDIMENTS (revised February 2009)

All Rudiments for 1st, 2nd, and 3rd year (except for 3rd year long roll) shall be played soft to loud to soft. 3rd year long roll and all 4th year Rudiments shall be played open-closed-open. Players may be asked to play Rudiments from previous years.

FIRST-YEAR PLAYERS

Single Paradiddle



R L R L R L R L

Flam



L R

Long Roll



R R L L R R L L

Flam Tap



L R R R L L L R R R L L

SECOND-YEAR PLAYERS

5-stroke roll



R R L L R

9-stroke roll



R R L L R R L L R

THIRD-YEAR PLAYERS

Flam Accent



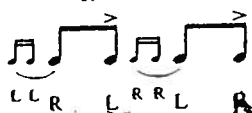
L R L R R L R L

Drag



L L R R R L

Drag Tap



L L R L R R L R

Ratamacue



L L R L R L R R L R L R

Long Roll (Open-Closed-Open)



L L R R L L R R L L R R L L R R L L R R L L R R L L R R L L R R L L

FOURTH-YEAR PLAYERS+

Flamacue



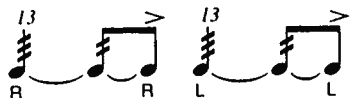
L R L R L R L R

Flam Paradiddle



L R L R R L R L L

13-stroke roll



R L R L R L R L R L R L R

17-stroke roll



R L R L R L R L R L R L R L R L R

Double paradiddle



R L R L R L R L R L R L R L L